



# ENVIRONMENTAL GAME: ECO CHALLENGE



Co-funded by  
the European Union

# Rules

2-6 players, 20 min, 10+ years

You are an alien trapped on planet Earth. You collect garbage and use it to repair your spaceship so you can return home. Many of the items can be reused, but there are also dangerous wastes among them. Can you leave the planet in a better condition than you found it?

## What do you need?

1x spaceship card  
10x natural disaster cards  
12x mission cards  
80x garbage cards

## Objective of the game

The goal of the game is to collect all the garbage needed to repair the spaceship. You lose the game if you run out of cards in the natural disaster deck.

## Game setup

1. Find the card with the alien and the spaceship and place it on the table.
2. Shuffle the mission cards and place them face up on all the empty spaces on the spaceship. Put any unused cards aside.
3. Shuffle all the garbage cards and place them face down around the spaceship. This is the junkyard where you will search for useful garbage.
4. Take all the natural disaster cards. In a game with two players, use all 10 cards; in a game with more players, remove one card for each additional player. Shuffle the natural disaster cards and place them face down in a pile.

## Gameplay

1. The game proceeds in three steps.
2. Explore the junkyard. Each player looks under two garbage cards and tries to remember what is on them. You must not show the cards to the other players.
3. Attempt to repair the spaceship. Look at one of the missions and which garbage you need to reveal to complete the mission. Discuss with your teammates if you collectively know where the correct garbage is to do this. On the count of three, everyone simultaneously reveals the selected garbage.
4. If you revealed the correct garbage in the correct amount, place it on the mission card to complete the mission. If you complete all the missions, you win the game; otherwise, return to step 1.
5. If you revealed too few or incorrect garbage, proceed to step 3.
6. A natural disaster occurs. Draw 1 natural disaster card plus 1 additional card for each dangerous waste revealed. If there are no more cards to draw, you lose the game. Hide back all the cards that were revealed. Carry out the actions described on the natural disaster cards.

Category	Waste	
Mixed Waste	<ul style="list-style-type: none"> <li>Diapers and cat litter</li> <li>Cooled ash and vacuum cleaner bags</li> <li>Fabrics, leather, and tailoring waste</li> <li>Cassettes, films, and photographs</li> <li>Cork and rubber</li> <li>Ceramics, porcelain, and light bulbs</li> <li>Insulation and car glass</li> </ul>	<ul style="list-style-type: none"> <li>Diapers</li> <li>T-shirt</li> <li>Teddy bear</li> <li>Light bulb</li> <li>Ceramic bowl</li> <li>Leather wallet</li> </ul>
Glass	<ul style="list-style-type: none"> <li>Bottles for food and drinks</li> <li>Glass packaging for medicines and cosmetics</li> <li>Jars for pickled foods</li> <li>Other glass packaging</li> </ul>	<ul style="list-style-type: none"> <li>Bottle</li> <li>Jar</li> <li>Pickling jar</li> <li>Glass vase</li> <li>Water pitcher</li> </ul>
Packaging	<ul style="list-style-type: none"> <li>Plastic bottles for drinks and food</li> <li>Bottles for cleaning and laundry products</li> <li>Cans for food and drinks</li> <li>Carton packaging for milk, juices, etc.</li> <li>Plastic bags and cups</li> <li>Plastic packaging for shampoos, toothpaste, and liquid soaps</li> <li>Packaging for CDs and DVDs</li> <li>Plastic and aluminum foil wrapping products</li> <li>Styrofoam packaging</li> </ul>	<ul style="list-style-type: none"> <li>Plastic bottle</li> <li>Plastic bag</li> <li>Can</li> <li>Yogurt cup</li> <li>Milk carton</li> <li>Shampoo packaging</li> </ul>
Organic Waste	<ul style="list-style-type: none"> <li>Vegetable and fruit waste of all kinds</li> <li>Eggshells</li> <li>Coffee grounds and filter bags</li> <li>Spoiled food products</li> <li>Cooked food leftovers and rotten fruit</li> <li>Paper napkins, towels, and paper bags</li> <li>Branches, grass, and leaves</li> <li>Flowers and weeds</li> <li>Litter of small herbivorous animals</li> </ul>	<ul style="list-style-type: none"> <li>Apple core</li> <li>Eggshells</li> <li>Flowers</li> <li>Banana peel</li> <li>Leaves</li> <li>Coffee grounds</li> </ul>
Paper	<ul style="list-style-type: none"> <li>Newspapers and magazines</li> <li>Notebooks and books</li> <li>Brochures and catalogs</li> <li>Envelopes</li> <li>Office and wrapping paper</li> <li>Paper shopping bags</li> <li>Cardboard packaging and cardboard</li> </ul>	<ul style="list-style-type: none"> <li>Letter</li> <li>Box</li> <li>Notebook</li> <li>Egg carton</li> <li>Paper shopping bags</li> <li>Office paper</li> </ul>
Hazardous Waste	<ul style="list-style-type: none"> <li>Used car batteries</li> <li>Batteries</li> <li>Paints and solvents</li> <li>Chemicals</li> <li>Oils and fats</li> <li>Pesticides</li> <li>Detergents and cosmetics containing hazardous substances</li> <li>Medicines</li> <li>Neon tubes</li> <li>Everything marked with symbols for hazardous substances and their packaging</li> </ul>	

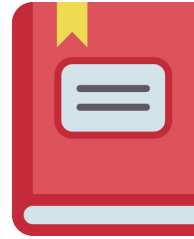
**PLAYING CARDS**



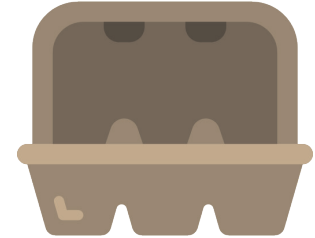
**LETTER**



**CARDBOARD BOX**



**NOTEBOOK**



**BOX FOR EGGS**



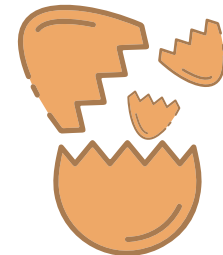
**PAPER SHOPPING BAG**



**OFFICE PAPER**



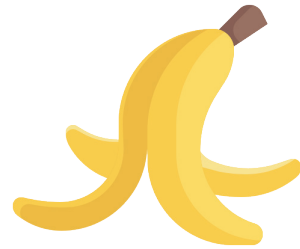
**EATTEN APPLE**



**EGG SHELL**



**FLOWERS**



**BANANA PEEL**



**LEAVES**



**COFFEE GROUNDS**



**PLASTIC BOTTLE**



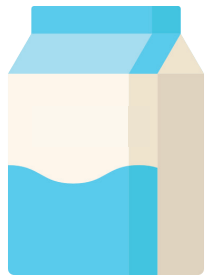
**PLASTIC BAG**



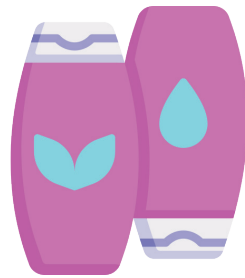
**CAN**



**YOGURT CUP**



**MILK CARTON**



**SHAMPOO  
PACKAGING**



**GLASS BOTTLE**



**GLASS**



**JAR**



**GLASS VASE**

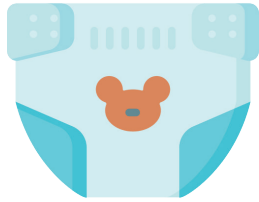


**WATER JUG**



**GLASS BOWL**





**DIAPERS**



**SHIRT**



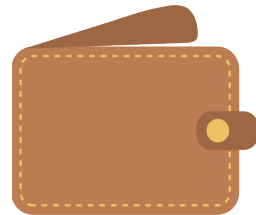
**TEDDY BEAR**



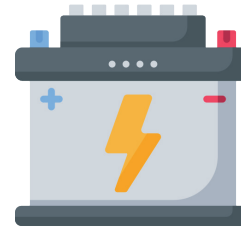
**LIGHT BULB**



**CERAMIC BOWL**



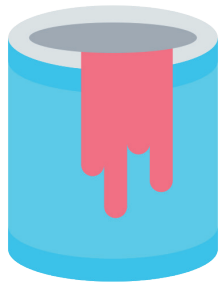
**LEATHER WALLET**



**DISCHARGED CAR  
BATTERY**



**BATTERIES**



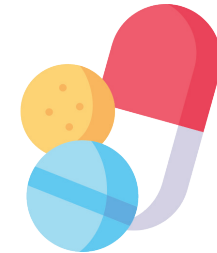
COLOR



CHEMICALS



OIL



DRUGS

**MISSION CARD**

1x PAPER  
1x PACKAGING  
1x MIXED  
WASTE

**MISSION CARD**

2x MIXED  
WASTE  
2x PAPER

**MISSION CARD**

2x ORGANIC  
WASTE  
2x MIXED  
WASTE

**MISSION CARD**

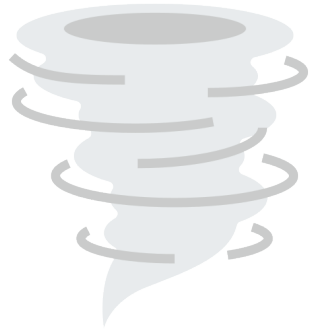
1x ORGANIC  
WASTE  
1x GLASS  
1x PAPER

**MISSION CARD**

2x PACKAGING  
2x GLASS

<p><b>MISSION CARD</b></p> <p>3x PAPER</p>	<p><b>MISSION CARD</b></p> <p>2x GLASS 2x ORGANIC WASTE</p>	<p><b>MISSION CARD</b></p> <p>2x PACKAGING 2x MIXED WASTE</p>	<p><b>MISSION CARD</b></p> <p>2x PAPER 2x PACKAGING</p>	<p><b>MISSION CARD</b></p> <p>3x GLASS</p>
<p><b>MISSION CARD</b></p> <p>1x ORGANIC WASTE 1x PACKAGING 1x MIXED WASTE</p>		<p><b>MISSION CARD</b></p> <p>3x ORGANIC WASTE</p>		





**TORNADO**  
EACH PLAYER TURNS  
RANDOM CARD



**FLOOD**  
CARDS ON GARBAGE DUMP  
SHUFFLES



**STORM**  
EACH PLAYER TURNS CARD  
WHICH MUST HAVE  
DIFFERENT WASTE



**SHIP DAMAGE**  
ADD A NEW MISSION TO THE  
COMPLETED PART OF THE  
SHIP.  
\*IF THERE IS NO COMPLETED PART YET, REPLACE  
THE EXISTING MISSION

## DANGER CARDS



# ENVIRONMENTAL GAME: ECO CHALLENGE

Blank box for text.

Blank box for text.

Blank box for text.

Blank box for text.

Blank box for text.

Blank box for text.

